



rubyO[®]

Next-Gen Enhanced Omega-3.

Smart Solutions Portfolio

Ready-to-Market & Customizable
Omega-3 Architectures

Built on BPL-O3™, our bonded phospholipid omega-3 platform, Ruby-O[®] delivers ready-to-market solutions and customizable architectures designed for brain, heart, prenatal, sports, and longevity health.

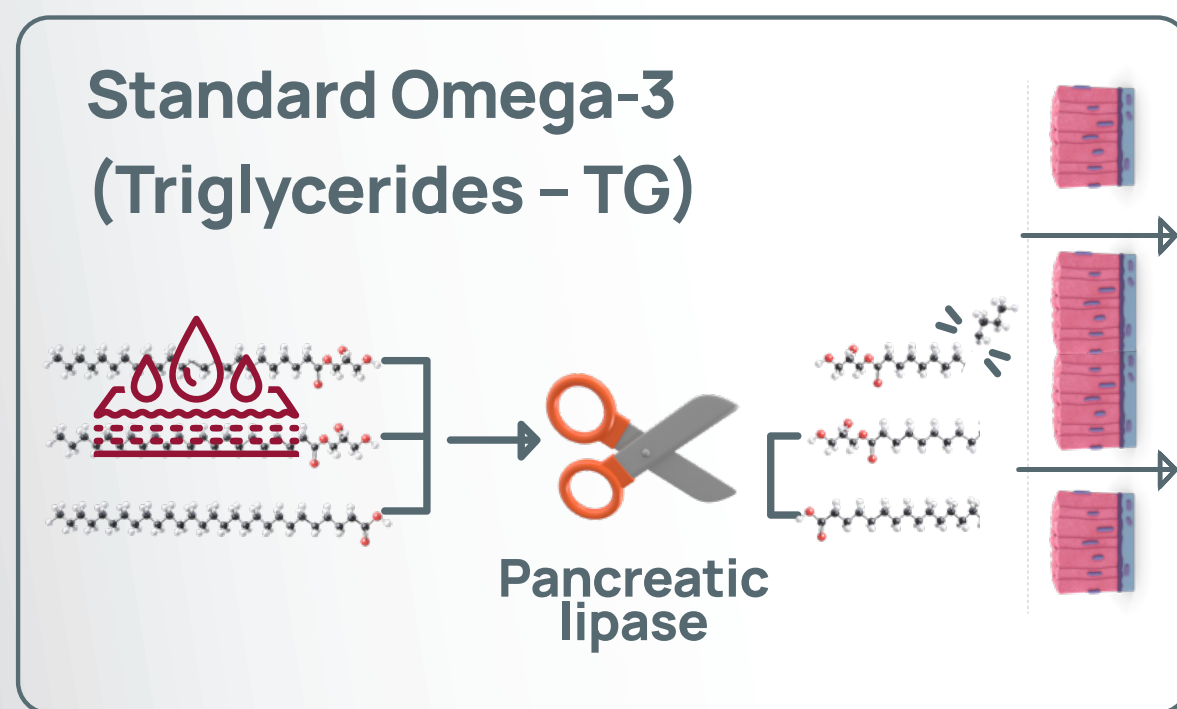


The Biomimetic Design

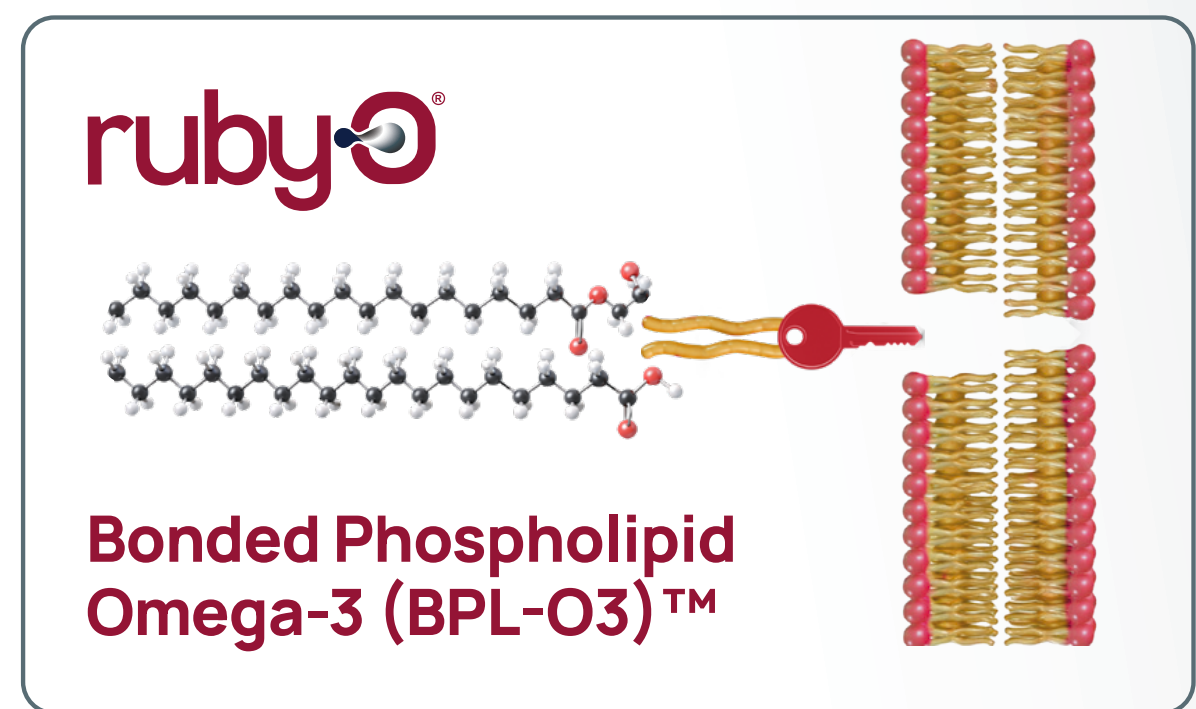
Principle, the Ruby-O[®] way

Designed Like the Body Works

Biomimetic design means designing solutions that emulate natural biological systems.



Standard omega-3s are primarily delivered in triglyceride (TG) form. They require hydrolysis by pancreatic lipase to release free fatty acids, a process that can reduce the efficiency of their incorporation into cellular membranes. Their absorption is also highly dependent on dietary fat intake.



Through BPL-O3[™], EPA and DHA are bonded to phospholipids, molecules naturally involved in lipid transport and cell membrane structure. This biomimetic design mirrors the way omega-3 is organized in biological membranes, supporting more efficient delivery.

Ruby-O[®] BPL-O3[™] is biomimetic because it:



Uses phospholipid architecture similar to human cell membranes.



Mimics natural lipid transport pathways.



Reduces reliance on digestive reassembly.



Aligns with how Omega-3 is naturally handled in the body.

Ruby-O[®] does not force biology to adapt. It adapts to biology, offering the “key to the cell”

Ruby-O[®] BALANCE

Clinically Proven.
Ready to Launch.



Clinically validated to deliver up to **3× greater triglyceride target attainment** at a lower omega-3 dose and **34% increase in Omega-3 index improvement.**



Supported by **human clinical study**



Lower dose, **better compliance**



Clean, premium, **science-backed** story



Addresses the **non-responder problem**



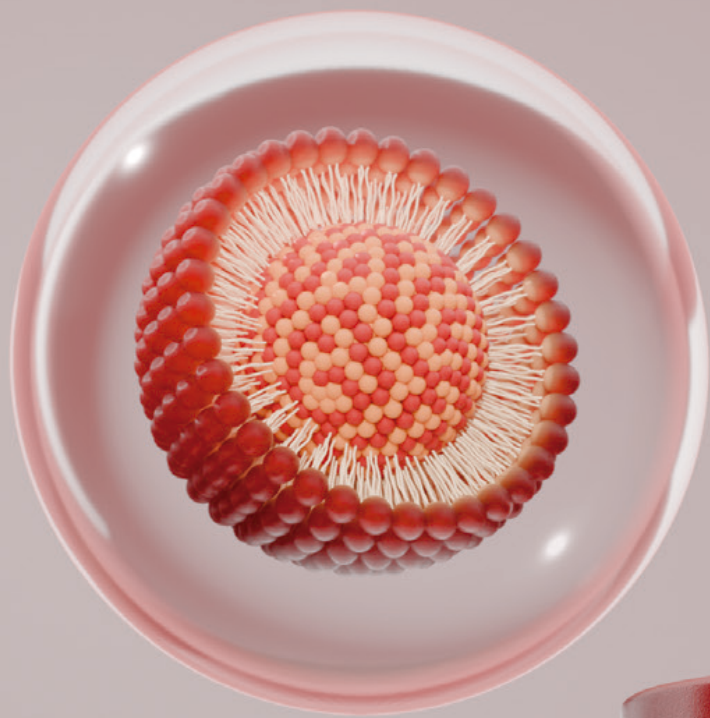
Ideal for **cardiometabolic** positioning



This is your fastest clinical-backed Omega-3 launch.

Based on the Ruby-O[®] Balance clinical study. Scan the code to read the full study.





Customizable Lipid Architecture

A molecular platform that
can be adapted to:



Different omega-3
concentrations.



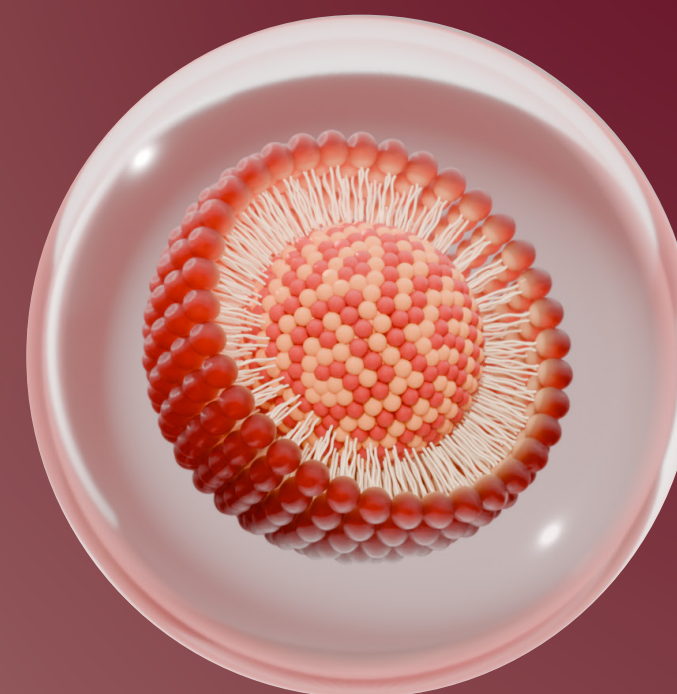
Varying
phospholipid ratios.








Specific health
applications.



This flexibility allows alignment with
targeted **clinical strategies**.



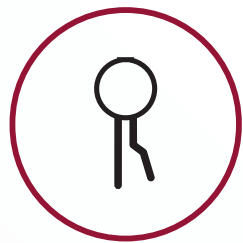
Ready-to-Market Solutions.
Fully Customizable by Design.

	Product Name	Phospholipids (mg/g)	EPA (mg/g)	DHA (mg/g)	Total Omega-3 (mg/g)	Source
	Ruby-O™ Prenatal	400	50	250	330	Fish Oil
	Ruby-O™ Neuro	400	42	260	340	Fish Oil
	Ruby-O™ Cardio	400	180	90	310	Fish Oil
	Ruby-O™ Balance	400	160	110	320	Fish Oil
	Ruby-O™ Plant Based	300	-	400	400	Algae Oil

These are ready-to-market formulations powered by Ruby-O®.

Beyond these concepts, we can customize omega-3 architectures for brain, heart, prenatal, sports, and longevity health, adjusting phospholipid ratios, concentrations, and bioactive combinations to meet your specific product goals.

5 Claims Brands Can Build On



Designed to Work the Way
Your Body Uses Omega-3

Inspired by biology, not chemistry.
Ruby-O® is designed around how Omega-3
appears in nature and how the body recognizes
and utilizes lipids, supporting smarter absorption



More Benefit
per Serving

Smarter delivery, not higher doses.
Ruby-O focuses on omega-3 efficiency, delivering
more functional benefit per mg and enabling fewer
capsules with meaningful outcomes.



Improves Omega-3
Levels in the Body

What matters is what your body builds.
Ruby-O demonstrated 34% greater omega-3
incorporation efficiency, measured by the
Omega-3 Index per mg of EPA+DHA, versus
standard fish oil.



Broader Health
Signals

Omega-3 works systemically, not in silos.
Improved omega-3 utilization supports broader
cardiometabolic signals, enabling more holistic
wellness positioning beyond a single marker.



Helps More People Reach
Healthy Triglycerides

Designed to close the omega-3 response gap.
In a 12-week clinical study, Ruby-O® Balance achieved up to 3× greater triglyceride target attainment versus
standard fish oil, despite a lower omega-3 dose.



Talk to our Experts!

 naturmega.com

 [naturmega](https://www.linkedin.com/company/naturmega)

 info@naturmega.com