

rubyo®

Next-Gen Enhanced Omega-3.



Omega-3, reengineered at the cellular level

A new lipid architecture designed to work with biology.





A MOLECULAR PLATFORM, NOT JUST A BRANDED INGREDIENT



Ruby-O® is a next-generation enhanced omega-3 platform, where active components form one unified molecular structure, not just a blend.

Through our proprietary* *Bonded Phospholipid Omega 3* (BPL-O3™) architecture, EPA, DHA and phospholipids are enzymatically bonded into a single lipid matrix designed to optimize absorption, minimize dosing, and enable precision delivery.

Ruby-O® molecular platform is composed of:



Phospholipids

Essential building blocks of all cell membranes, responsible for life itself. In Ruby-O®, they form the structural foundation that transports nutrients across barriers, stabilizes emulsions, and enhances absorption.



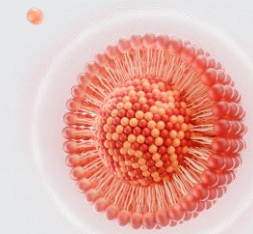
Omega-3 EPA & DHA

Essential fatty acids bonded to the phospholipid matrix for efficient delivery to the brain, heart, eyes, and other tissues.



Astaxanthin (optional)

A powerful antioxidant that protects the lipid structure and imparts Ruby-O®'s signature red ruby tone.



Synergistic Lipid matrix

Ruby-O® serves as an ideal carrier to other fat-soluble bioactives such as CoQ10, curcumin, and vitamins A, D, E, and K.

OUR BREAKTHROUGH:

Ruby-O®: The Bonded Phospholipid
Omega-3 Platform

A next-gen biotech
innovation where omega-3s
are **molecularly bonded for
superior absorption,
precision delivery, and
clean-label performance.**

ruby-o®
Next-Gen Enhanced Omega-3.

*Bonded to Absorb.
Built to Adapt.
Ready to Deliver.*



Clinically proven to
outperform krill oil in
absorption and uptake



Versatile platform for
cardiovascular, cognitive, women's
health, and sports applications, co-
creation and custom applications.



Naturally self-emulsifies for
superior bioavailability



Built-in flexibility for brand-
exclusive applications, formats,
and ingredient synergies



Transports bioactives
directly to target tissues



2.74x greater triglyceride
reduction than standard fish oil, at
a lower daily EPA+DHA dose

Why Ruby-O® Works as a Platform.

Bonded innovation. Real-world performance.
Brand-building flexibility.

NO FISHY AFTERTASTE OR REFLUX

Smooth experience, better adherence. No reflux or burps.



BONDED FOR ENHANCED ABSORPTION

Not just mixed. Molecularly bonded. Ruby-O® self-emulsifies and bonds omega-3s with phospholipids reaching target cells faster and more efficiently.



CLINICALLY BACKED PERFORMANCE

Proven to outperform krill oil in absorption and EPA/DHA delivery and now validated in a recent study demonstrating clinical relevance in TG reduction nearly 3x, even at a lower dose than standard fish oil omega-3.



FEWER DOSES, MORE EFFECT

Delivers more with less. Superior bioavailability means lower daily dosing, faster effects, and a cleaner label without compromising performance.



CLEAN-LABEL AND ALLERGEN-FREE

Naturally compliant. Free from shellfish, gluten, and artificial additives with marine and vegan sourcing options built for modern consumers.



MULTI-BIOACTIVE SYNERGY

A platform built for synergy. Ruby-O® can be combined with choline, folate, or other actives to target brain, liver, prenatal, and cellular health, delivering more in one structure.



VERSATILE DELIVERY FORMATS

Ready for gummies, softgels, liquids and beyond. Flexible across delivery forms and demographics, ideal for innovation pipelines and B2B scalability.



ruby-O®

Next-Gen Enhanced Omega-3.

WHY IT WORKS?

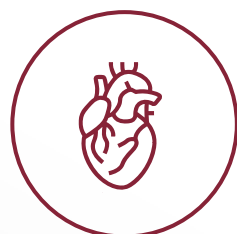


Ruby-O® is molecularly bonded to work with your biology.

Its unique bonded phospholipid structure seamlessly integrates with your cell membranes, **delivering omega-3s and choline where they matter most: your brain, heart, and mitochondria.**

This advanced lipid system forms stable nano emulsions improving absorption and bioavailability.

TARGETED HEALTH BENEFITS



CARDIOVASCULAR HEALTH

Helps lower triglycerides, reduce inflammation, and support vascular tone, with clinically proven performance at lower doses.



COGNITIVE & BRAIN FUNCTION

Delivers DHA to enhance memory, focus, and mood, with faster brain uptake.



WOMEN'S & PRENATAL HEALTH

Supports hormonal balance and fetal neurodevelopment, with clean-label, phospholipid-powered delivery.



HEALTHY AGING

Boosts mitochondrial energy and cellular resilience, key for longevity and graceful aging.



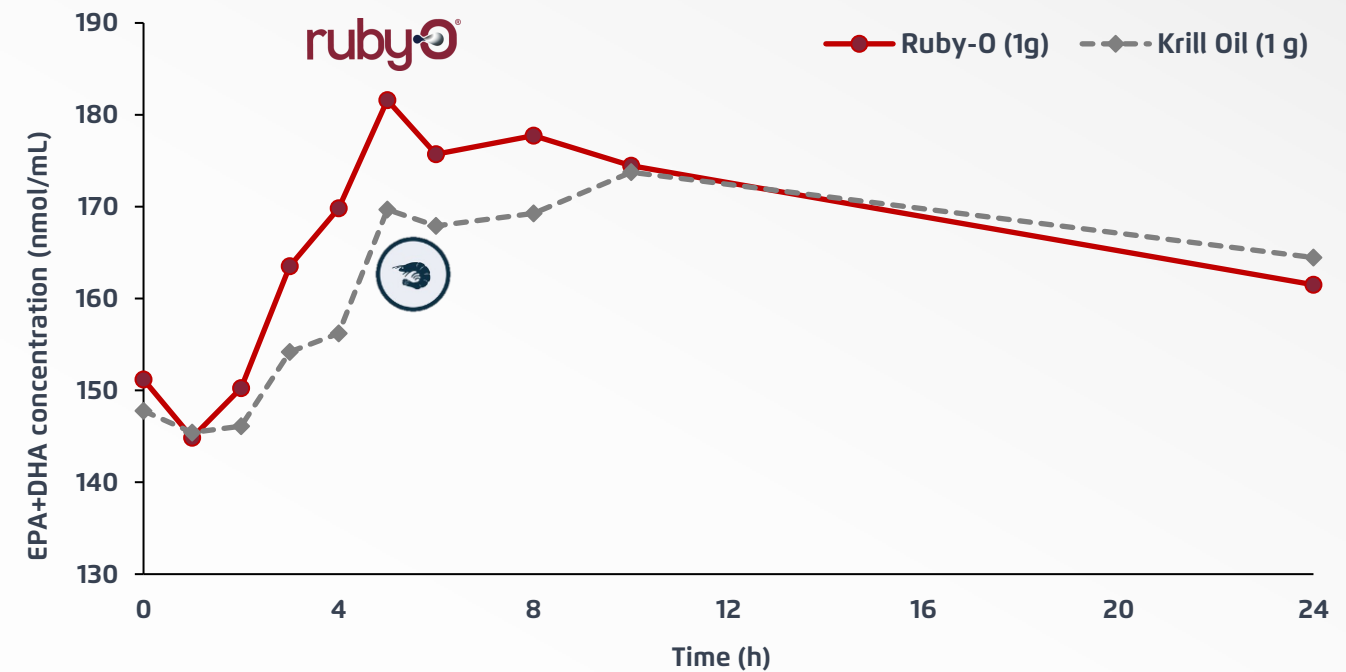
SPORTS & ACTIVE LIFESTYLE

Accelerates recovery and protects joints and muscle performance, without the fishy aftertaste or GI distress.

THE SCIENCE BEHIND RUBY-O®

RUBY-O® DELIVERS FASTER AND HIGHER PEAK OMEGA-3 UPTAKE THAN KRILL OIL, SUGGESTING SUPERIOR SHORT-TERM BIOAVAILABILITY AND POTENTIAL FOR LOWER-DOSE EFFICACY.

- » *Ruby-O® delivers more omega-3 to the bloodstream, **and gets there quicker than krill oil!***
- » *25% higher EPA+DHA peak concentration*
- » *EPA peak reached 2.4 hours faster*
- » *62% more EPA+DHA per capsule*
- » *No fishy aftertaste or digestive discomfort*



Mean (SE) of eicosapentaenoic acid + docosahexaenoic acid plasma concentrations over 24 h after a single oral dose of phospholipid-enhanced fish oil or krill oil (N=24).

ACHIEVING MORE WITH LESS:

RUBY-O® DEMONSTRATES EFFICACY AT A SIGNIFICANTLY LOWER DOSE*.

Can you deliver real triglyceride reduction with less omega-3 than traditional high-dose products?

Ruby-O® took on that challenge, and the results of the second clinical study were clear.

Head-to-Head Comparison:
Ruby-O® Balance vs. Standard
Fish Oil



(phospholipid-bonded
lipid matrix):

**825 mg/Day
(EPA+DHA)**



Standard
Omega-3 Fish Oil:

**903 mg/Day
(EPA+DHA)**

KEY FINDINGS:



2.74x greater TG reduction vs. control, at a lower daily dose (825 mg/day vs. 903 mg/day EPA+DHA)

More responders: **≥20% TG reduction** or out of the high-risk zone






34% Omega-3 Index improvement, from 5.60% to 7.38%, approaching the optimal >8% range

*12-week, randomized, double-blind clinical trial involving adults diagnosed with hypertriglyceridemia. Participants were assigned to receive either Ruby-O® Balance or a standard omega-3 supplement, each at a dose of 3 capsules per day. Despite delivering a lower daily EPA+DHA dose (825 mg vs. 903 mg), Ruby-O® demonstrated superior outcomes in triglyceride reduction and Omega-3 Index improvement.



FORMULATED FOR PERFORMANCE.
POWERED BY SCIENCE.



	Product Name	Phospholipids (mg/g)	EPA (mg/g)	DHA (mg/g)	Total Omega-3 (mg/g)	Source
	Ruby-O™ Prenatal	400	50	250	330	Fish Oil
	Ruby-O™ Neuro	400	42	260	340	Fish Oil
	Ruby-O™ Cardio	400	180	90	310	Fish Oil
	Ruby-O™ Balance	400	160	110	320	Fish Oil
	Ruby-O™ Plant Based	300	-	400	400	Algae Oil



From brain to heart to prenatal health, these formulas are designed to meet the needs of today's wellness consumers, with clinically backed absorption, and clean-label flexibility. **And with Ruby-O® as your platform, the formulation possibilities are endless.**

Ruby-O® and its Synergistic Combinations

Vision Product Concept:

A BRAND-READY SOLUTION



WHAT MAKES **RUBY-O®** A BRAND-READY SOLUTION?



Unlock Premium Innovation with Ruby-O® Platform

Standout in a crowded omega-3 space with a **patented**, bonded lipid structure, not just a blend of ingredients

Formulate faster with a **plug-and-play platform** compatible with capsules, liquids, and gummies

Clinically driven differentiation: go **beyond commodity omega-3** with **measurable** performance benefits.

Do more with less: higher bioavailability allows lower doses with greater impact.

Capture new **growth in high-demand segments:** metabolic health, cognition, women's health, prenatal, performance, and healthy aging

Own the narrative: position your brand as the next-generation omega-3 leader



**Product concepts with Ruby-O Formulations*



- **17+ years** of expertise in advanced lipid science and nutritional innovation
- Developer and manufacturer of Ruby-O® and **other patented lipid technologies**
- Specialized in **medium and high-potency omega-3 concentrates, algal oils, phospholipid systems, and custom lipid platforms**
- Home **to a dedicated Innovation Center for lipid research**, formulation development, and clinical support
- **Partner to global brands and leading CDMOs** in product development and scale-up
- Present in **20+ countries across North America, Latin America, Europe, and Asia**
- Trusted for **quality, scalability, and clean-label solutions**
- A pioneer in **molecular distillation technology in Latin America**, also **hosting the region's first supercritical CO₂ fractionation facility**



ITS NOT A SIMPLE INGREDIENT,
IT'S A PLATFORM.

Achieve More With Less.

ruby^o

Next-Gen Enhanced Omega-3.

Contact us

contacto@naturmega.com.co

www.naturmega.com